

To: All Early Intervention contract managers and FCFC coordinators  
From: Nathan DeDino  
Date: October 22, 2021  
Subject: Early Intervention Program Updates, #2125

## ***MESSAGE FROM THE PART C COORDINATOR***

We are pleased to release an [updated EI program consultant map](#) that reflects the addition of Lindsey Jay to our team. This map will go into effect November 1. Thank you in advance for your partnership as some counties change EI program consultants.

I always invite your feedback. Do not hesitate to contact me at [nathan.dedino@dodd.ohio.gov](mailto:nathan.dedino@dodd.ohio.gov). I look forward to hearing from you.

## ***PROGRAM UPDATES***

### **November 1 LEA Reporting**

The quarterly Local Educational Agency (LEA) reporting requirement is coming up at the end of the month. As a reminder, Ohio Administrative Code (OAC) 5123-10-02(L)(1)(b) requires each EI service coordination agency to notify the LEA (with parent consent) of children who will turn three within the next year by the first day of February, May, August, and November. This report is available in the EI Data System (EIDS) in both Excel and PDF formats. You may use either version, but please remember the following:

- The November 1 LEA report must be run no earlier than October 22 and no later than November 1. If the parent does not consent to share contact information with the LEA, “no” must be selected in EIDS in response to “Transition contact info shared with LEA:” on the most recent IFSP and the date the parent declined to share information must also be documented.
- It is expected that child information will be updated in a timely manner so that the LEA reports in EIDS are accurate.
- Only the sections of the report that are relevant to a particular LEA should be sent to that LEA, not the entire report.
- If you are not sure which LEA should be selected for a specific child, we encourage you to contact the relevant Educational Service Center (ESC) for clarification. Contact information for all of the ESCs and public school districts, along with a map of districts, is available here: <http://education.ohio.gov/Topics/Data/Ohio-Educational-Directory-System-OEDS>

This quarterly report must be provided to the LEAs no later than November 1. The report does not need to be submitted to DODD, but we encourage you to keep a copy for your records. If you have any questions, please contact Melissa Courts at [melissa.courts@dodd.ohio.gov](mailto:melissa.courts@dodd.ohio.gov).

## **SFY21 Infographic**

In EI Program Updates #2123 we indicated that county SFY21 summary reports had been sent to Contract Managers and FCFC coordinators on September 17 and that the SFY21 statewide summary infographic would be posted on the EI website in the coming weeks. This SFY21 infographic is now available (along with SFY16-SFY20 infographics) here:

<https://ohioearlyintervention.org/data-and-monitoring-resources>

## **Annual Performance Report Targets**

DODD has posted proposed targets for the Annual Performance Plan (APR) that will be submitted to the federal Office of Special Education programs in early 2022. States undergo a target-setting process every 5-6 years when OSEP issues a new APR package. DODD and EI Advisory Council and Stakeholder Group have been working for a year and a half to understand baseline data and think through rigorous, yet attainable, targets. Please take a look and provide us with any feedback you have. You can access the document here:

<https://ohioearlyintervention.org/federal-reporting-and-postings>

## ***RESOURCES AND TRAINING OPPORTUNITIES***

### **New! Reflective Supervision Learning Collaborative**

“Reflective supervision is a relationship for learning.” We are excited to announce the start of a virtual community of practice exploring reflective supervision. Facilitated by Dr. Robert Gallen and colleagues at the University of Pittsburgh, the community includes monthly meetings via Zoom. Participants may attend on a “drop-in” basis as available. This is an opportunity to build capacity to implement reflective supervision practices. The criteria for participation are as follows:

- Supervision of EI team members in current role
- Completion of Dr. Gallen’s Reflective Supervision training
- Openness to variety of learning styles and willingness to actively provide and receive reflective supervision
- Interest in growing reflective supervision practices

All sessions will be held on Friday mornings from 9:00-10:30am and will use the same registration link.

Participation in the Reflective Supervision Learning Community is approved as professional development for EI Supervisors, EISC Supervisors, county board superintendents, and OIFP Levels II and III (Professional Development category).

#### *Dates*

2021: October 22, November 19, and December 17

2022: January 21, February 18, March 18, April 15, May 20, and June 17

### *Registration*

Please download and import the following iCalendar (.ics) files to your calendar system.

Monthly:

[https://pitt.zoom.us/meeting/tJAoc-qhrj8jEtQt-j0eQflGQD4BHgQc5wES/ics?icsToken=98tyKuCsqz8pE9SRuRGHRowIGY-gb\\_PziClEj7dsiFLvUyViZA\\_RB8YWEJp4IduF](https://pitt.zoom.us/meeting/tJAoc-qhrj8jEtQt-j0eQflGQD4BHgQc5wES/ics?icsToken=98tyKuCsqz8pE9SRuRGHRowIGY-gb_PziClEj7dsiFLvUyViZA_RB8YWEJp4IduF)

Join Zoom Meeting

<https://pitt.zoom.us/j/94543904980>

Meeting ID: 945 4390 4980

One tap mobile

+12678310333,,94543904980# US (Philadelphia)

8778535247,,94543904980# US Toll-free

Dial by your location

+1 267 831 0333 US (Philadelphia)

877 853 5247 US Toll-free

Meeting ID: 945 4390 4980

Find your local number: <https://pitt.zoom.us/u/afkbOTn0K>

Join by SIP

[94543904980@zoomcrc.com](mailto:94543904980@zoomcrc.com)

Join by H.323

162.255.37.11 (US West)

162.255.36.11 (US East)

Meeting ID: 945 4390 4980

If you have questions, please contact Lori Myers at [lori.e.myers@dodd.ohio.gov](mailto:lori.e.myers@dodd.ohio.gov).

### **Bayley Scales of Infant and Toddler Development: Product Overview**

What is the difference between the Bayley third and fourth editions? What are the pros and cons of paper vs. digital administration? How do you purchase Bayley kits for your team? Please bring your questions and join a representative from Pearson Assessments, publisher of the Bayley on October 28 from 2:00-3:00pm.

This session will be recorded although the availability of the recording is limited to seven days after the live session.

CPDUs are not provided for this informational webinar. You can register here:

<https://ohioearlyintervention.org/trainings/254>



## November 2021 Training Calendar

Sunday	Monday	Tuesday	Wednesday	Thursday	Friday	Saturday
	1	2	3 RBI, Part 3 1-2:30 PM <i>Currently Full</i>	4	5	6
7 <b>Daylight Savings</b>	8	9	10 RBI Part 4 2:30-3:30 PM <i>Currently Full</i>	11 <b>Veterans Day</b>	12	13
14	15	16 Ecomapping 11 AM-12:30 PM Compliance: 45 Day Timeline 2-3 PM <a href="#">Registration Ecomapping</a> <a href="#">Registration Compliance</a>	17 RBI Part 4 10-11 AM or 1-2 PM <i>Currently Full</i>	18 Battelle Developmental Inventory 9 AM-4 PM <a href="#">Registration Link</a>	19	20
21	22	23	24	25 <b>Thanksgiving</b>	26	27
28	29 <b>Hanukkah Begins</b>	30				



# OCALICONLINE 2021

November 16-19, 2021 | Online

## Early Childhood at OCALICONLINE 2021: *More Than You Can Imagine!*

- Are you an early childhood teacher, child care provider, administrator, family member, or other early childhood professional?
- Are you looking for flexible ways to earn more Ohio Approved (OA) hours?
- Are you searching for options for your staff to use your Elementary And Secondary School Emergency Relief (ESSER)/American Rescue Plan (ARP) funding?

If you answered 'yes!' to any of these questions, then join us at **OCALICONLINE 2021**—the premier autism and disabilities conference—where you can earn OA hours, allocate your funding toward high-quality professional development, and learn the latest in research and practices to better your students and children!

This year, OCALI and early childhood organizations from across the state have teamed up to present and share the latest research and practical strategies for supporting young children. Through cross-sector collaboration, we are able to offer a diverse, high-quality professional learning experience to help create and strengthen Ohio's early childhood workforce to ensure all young children and families have the support and resources they need.

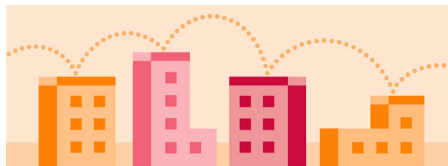
### What Makes OCALICON Different?



#### Across the Lifespan

##### Every age. Every milestone.

From early childhood to school-age to adulthood, we come together to learn, network, and share research, best practices, and resources to support the lifelong needs of individuals with disabilities and those who live with, love, and support them.



#### Across Agencies

##### Connecting the dots.

We collaborate with a range of partners, from state agencies to national organizations, local systems of support to grassroots organizations, all with the goal of sharing high-quality information, showcasing the latest research, and fostering innovation.



#### Across the World

##### It takes a (global) village.

Though OCALI is located in Columbus, Ohio USA – our reach is far and wide. Since 2007, our community has crossed geographical and national boundaries as we've welcomed thousands of participants from all 50 U.S. states and 19 countries.

Designed  
for YOU!

With almost 50 early childhood sessions—that's 40+ hours of early childhood professional development in one location—customize your schedule to meet your individual professional development needs!

Learn more and register at [conference.ocali.org/early-childhood](https://conference.ocali.org/early-childhood)



# Support Your Child's Growth. Act Early.

As a parent, you already have what it takes to help your young child learn and grow. We want to help you learn more about your child's amazing progress and how to track his or her developmental milestones —how he or she plays, learns, speaks, acts, and moves.

Join the Fall 2021 Act Early ECHO (Extension of Community Healthcare Outcomes) series, focused on using the ***Learn the Signs. Act Early.*** materials to learn how your family can build resilience in the face of COVID-19. You'll also be able to share your experiences in building resilience and ideas on how professionals can better meet the needs of families.

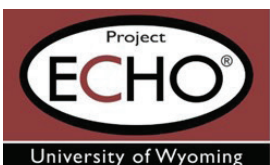
**October 15 | October 29 | November 12 | December 3**

**9:00am - 10:30am MST | 10:00am-11:30am CST | 11:00am-12:30pm EST**

**Register at [bit.ly/act-early-echo](https://bit.ly/act-early-echo)**

Attendance at all sessions is encouraged, but not required.

Families benefit from early intervention by being able to better meet their children's needs from an early age and throughout their lives.



School of Education  
Partnership for People  
with Disabilities

