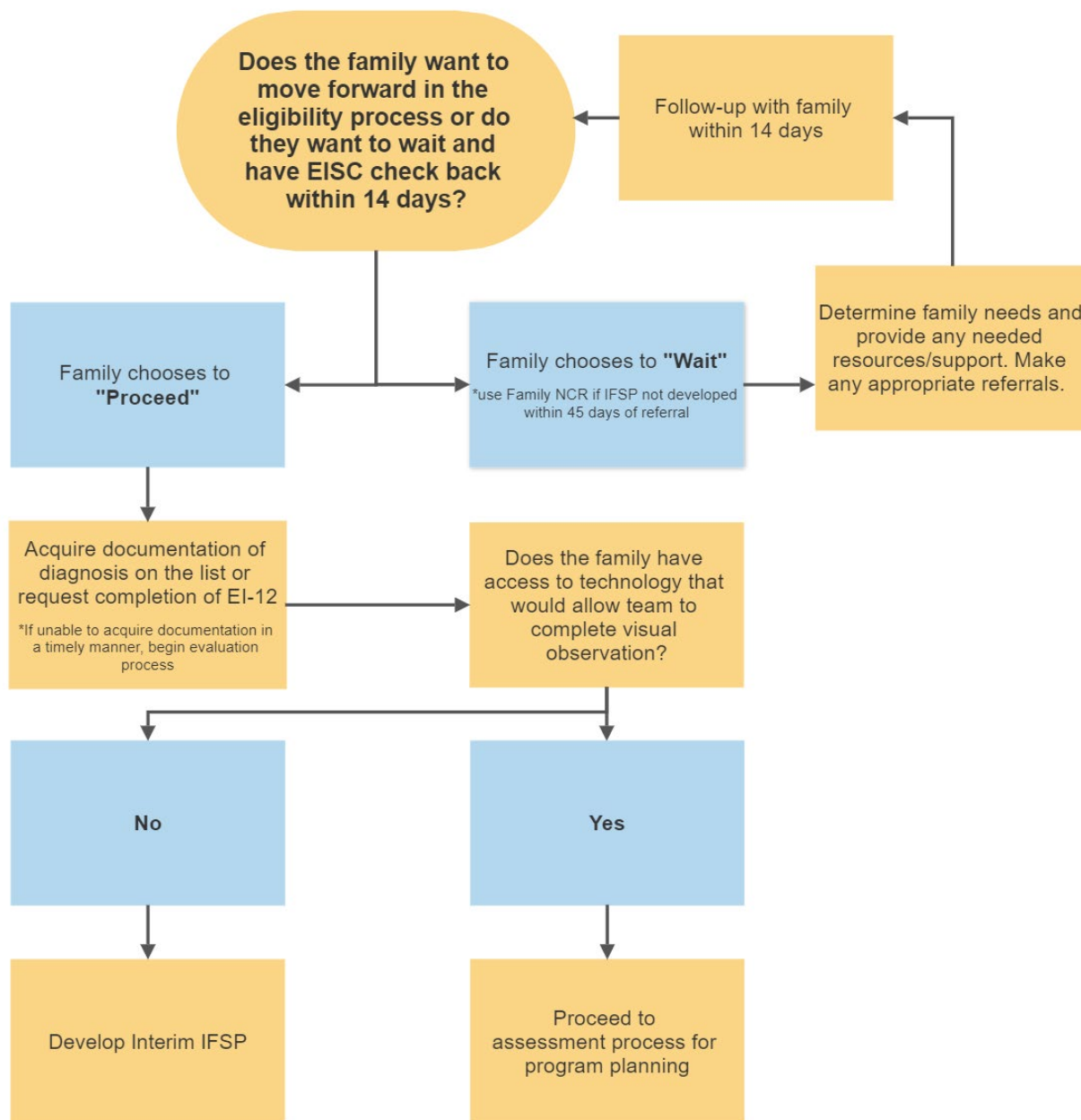


Appendix 2: Flowcharts for Completing the Eligibility Process During the COVID-19 Emergency

If your Early Intervention (EI) program receives a new referral or needs to re-determine eligibility for a child, the following processes should be followed as long as the state of emergency is in effect.

Start on this page if the child has a documented diagnosed physical or mental condition with a high probability of resulting in a developmental delay, as listed in 5123-10-02, appendix C, or a documented diagnosed physical or mental condition which is not listed in appendix C that could be documented on form EI-12.



Appendix 2: Flowcharts for Completing the Eligibility Process During the COVID-19 Emergency

Start on this page if the child does not have a documented diagnosed condition listed in appendix C, nor a diagnosed condition documented on EI-12, so eligibility must be determined through an evaluation or informed clinical opinion.

